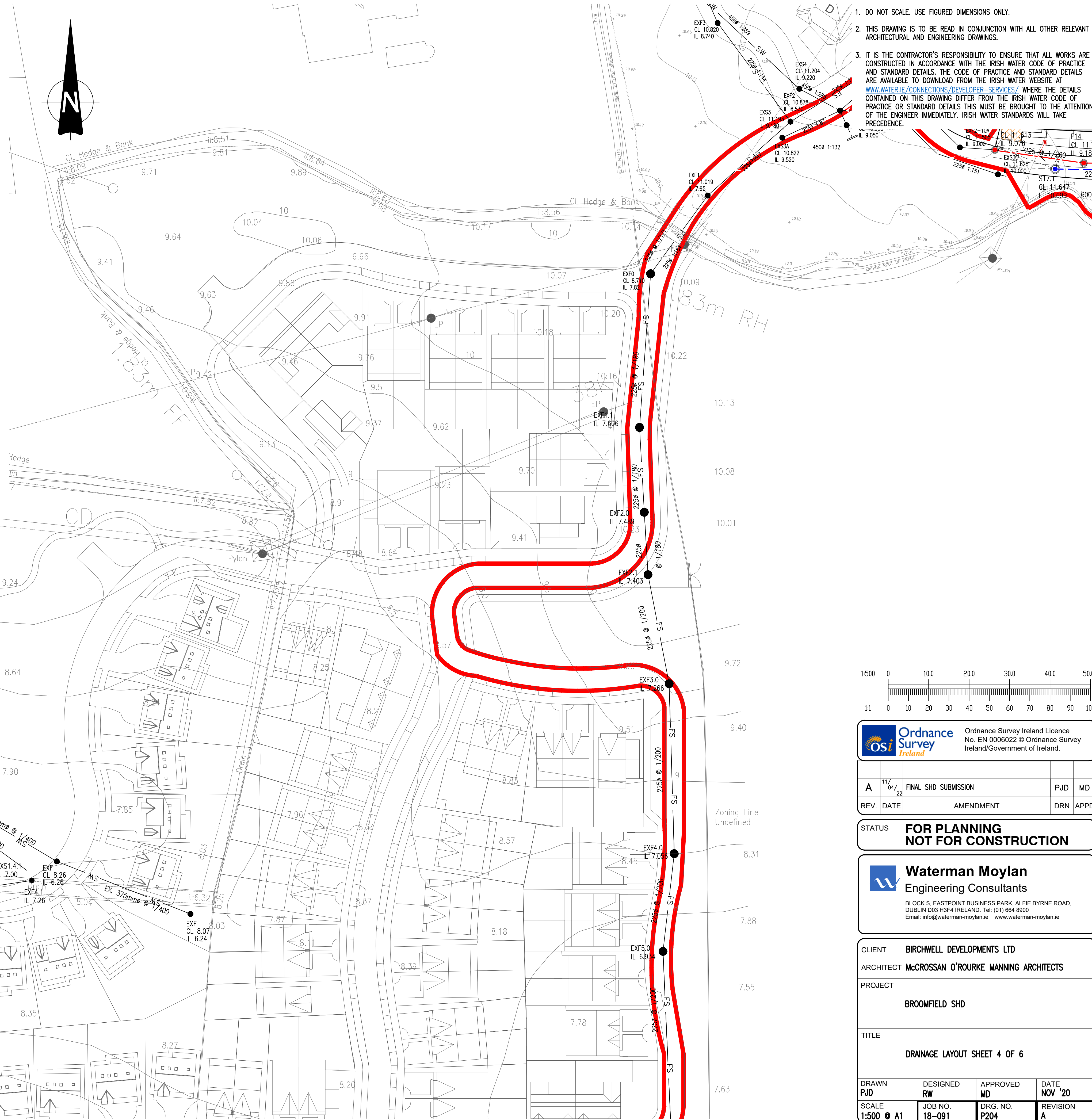


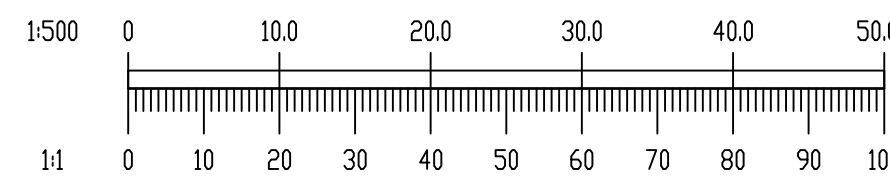
**LEGEND:**

— FS —	EXF	EXISTING FOUL WATER SEWER WITH PIPE SIZE, GRADE, MANHOLE REF. AND INVERT LEVEL
— SW —	EXS	EXISTING SURFACE WATER SEWER WITH PIPE SIZE, GRADE, MANHOLE REF. AND INVERT LEVEL
— FS —		EXISTING 225 $\phi$ FOUL SEWER TO BE UPSIZED TO 300 $\phi$ @ 1/300
— XXXmm $\phi$ @ 1/XXX —	FX	PROPOSED FOUL WATER SEWER WITH PIPE SIZE, GRADE, MANHOLE REF. AND INVERT LEVEL
— XXXmm $\phi$ @ 1/XXX —	SX	PROPOSED SURFACE WATER SEWER WITH PIPE SIZE, GRADE, MANHOLE REF. AND INVERT LEVEL
— 150 $\phi$ SIC —		PROPOSED PRIVATE SURFACE WATER DRAINAGE PIPE AND INSPECTION CHAMBER
— 150 $\phi$ FIC —		PROPOSED PRIVATE FOUL WATER DRAINAGE PIPE AND INSPECTION CHAMBER
— 150 $\phi$ SIC —		PROPOSED FILTER DRAIN
— SWALE —		PROPOSED SWALE WITH PERFORATED PIPE AND KERB INLET
— G —		PROPOSED GULLY AND CONNECTION
— [Pattern] —		PROPOSED PERMEABLE PAVING
— [Color] —		UNDERGROUND ATTENUATION STORAGE TANK
— [Color] —		PROPOSED GREEN ROOF
— [Symbol] —		PROPOSED BIO-RETENTION TREE PIT

NOTE:  
ALL PRIVATE FOUL WATER DRAINAGE TO BE IN ACCORDANCE WITH THE BUILDING REGULATIONS PART H TECHNICAL GUIDANCE DOCUMENT



- NOTES:
- DO NOT SCALE. USE FIGURED DIMENSIONS ONLY.
  - THIS DRAWING IS TO BE READ IN CONJUNCTION WITH ALL OTHER RELEVANT ARCHITECTURAL AND ENGINEERING DRAWINGS.
  - IT IS THE CONTRACTOR'S RESPONSIBILITY TO ENSURE THAT ALL WORKS ARE CONSTRUCTED IN ACCORDANCE WITH THE IRISH WATER CODE OF PRACTICE AND STANDARD DETAILS. THE CODE OF PRACTICE AND STANDARD DETAILS ARE AVAILABLE TO DOWNLOAD FROM THE IRISH WATER WEBSITE AT [WWW.WATER.IE/CONNECTIONS/DEVELOPER-SERVICES/](http://WWW.WATER.IE/CONNECTIONS/DEVELOPER-SERVICES/) WHERE THE DETAILS CONTAINED ON THIS DRAWING DIFFER FROM THE IRISH WATER CODE OF PRACTICE OR STANDARD DETAILS THIS MUST BE BROUGHT TO THE ATTENTION OF THE ENGINEER IMMEDIATELY. IRISH WATER STANDARDS WILL TAKE PRECEDENCE.



**Ordnance Survey Ireland**  
Ordnance Survey Ireland Licence No. EN 0006022 © Ordnance Survey Ireland/Government of Ireland.

A	11/04/22	FINAL SHD SUBMISSION	PJD	MD
REV.	DATE	AMENDMENT	DRN	APPD

STATUS: **FOR PLANNING NOT FOR CONSTRUCTION**

**Waterman Moylan Engineering Consultants**  
BLOCK S, EASTPOINT BUSINESS PARK, ALFIE BYRNE ROAD, DUBLIN D03 H3F4 IRELAND. Tel: (01) 664 8900  
Email: info@waterman-moylan.ie www.waterman-moylan.ie

CLIENT: BIRCHWELL DEVELOPMENTS LTD  
ARCHITECT: MCCROSSAN O'ROURKE MANNING ARCHITECTS  
PROJECT: BROOMFIELD SHD  
TITLE: DRAINAGE LAYOUT SHEET 4 OF 6

DRAWN PJD	DESIGNED RW	APPROVED MD	DATE NOV '20
SCALE 1:500 @ A1	JOB NO. 18-091	DRG. NO. P204	REVISION A